



Sandra Battle admitted to Rocky River Gardens on August 10, 2024 under the care of Khaleel Deeb. During the course of the stay, Occupational Therapy, Physical Therapy, and Speech Therapy were initiated to efficiently and effectively identify Sandra Battle's unique needs and tailor specialized treatment plans to successfully transition to the next level of care.

The therapy team provided skilled interventions to address the adaptation, compensation, and restoration potential of Sandra Battle and coordinated with the interdisciplinary team to ensure appropriate clinical care areas were addressed. On September 12, 2024, Sandra Battle successfully discharged to long term care.

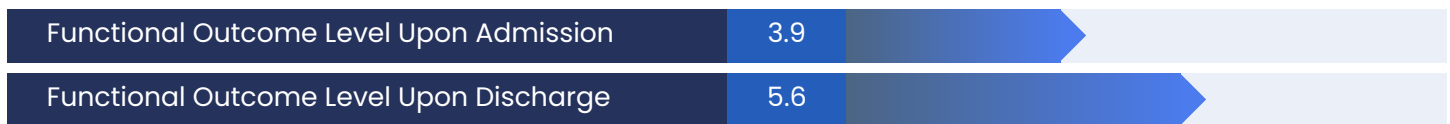
The rehabilitation length of stay was 34 days.

Sandra has made progress toward her goals of living a happy life. With a huge vibrant smile on her face, she stated " I would not be where I am without the therapy and nursing staff at Rocky. Everyone has been so helpful the nurses are nice, the therapists know what to do, the housekeepers and kitchen staff helped me too!"

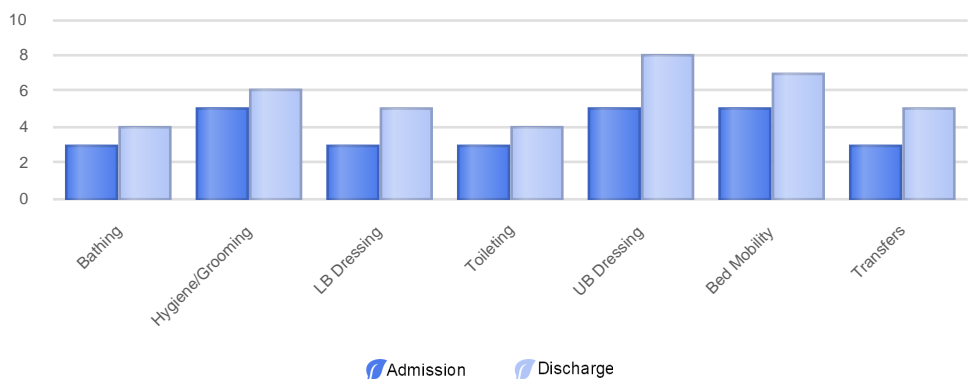
Overall Composite Score Outcomes

Rehabilitation outcomes are assessed on a 10-point rating scale. 10 is the most independent level of ability, and 1 is the most dependent level of ability. A score of 0 may represent an inability to perform the task. The Model 10 Composite Score represents Sandra Battle's overall outcomes.

Model 10 Composite Score Overview



Rehabilitation Outcomes Details



Thank you for the opportunity to care for Sandra Battle.